

12-1115

DYNASTY®

**TRUE
FRONT
ACCESS**

HIGH RATE MAX

**UPS12-410MRXF
UPS12-830MRXF
UPS12-1000MRXF**



Valve Regulated Lead Acid (VRLA) Battery Series Designed for UPS Standby Power Applications

APPLICATIONS

- Data Centers
- Network Operations Centers
- Industrial Process Control Facilities
- Internet Housing Sites
- Semiconductor Manufacturing
- Banks & Financial Markets
- Power Generation Plants
- Hospitals & Testing Laboratories
- Emergency 911 Response Centers

FEATURES & BENEFITS

- 10 Year Design Life @ 25°C
- True Front Access threaded copper alloy inserts for reduced maintenance and increased safety
- Terminal versatility - ease of diagnostic readings with C&D Ohmic Ring®
- Innovative front terminal design maximizing energy density with direct connect extrusion fusion weld technology
- Reduced headspace driving higher energy density, in cabinet or rack applications
- Removable handles for ease of installation
- Thermally welded case-to-cover bond to ensure a leak-proof seal
- Patented Long Life Alloy having the lowest calcium levels in the industry - minimizing grid growth, reducing gassing, and extending battery life
- Flame-retardant polypropylene case and cover compliant with
- UL94 V-0 with a Limiting Oxygen Index (LOI) of greater than 28
- Absorbent Glass Mat (AGM) technology for efficient gas recombination of over 99%
- Flame-arresting, one-way pressure-relief vent for safety and long life
- Complies with UL1778, 924, 1989 and 94 V-0. BS6290-4, IEC-896-2
- UL-recognized component
- Multicell design for ease of installation and maintenance
- Not restricted for air transport - Complies with IATA/ICAO Special Provision A67
- Not restricted for surface transport - classified as non-hazardous material as related to DOT-CFR Title 49 parts 171-189
- Not restricted for water transport - classified as non-hazardous material per Amendment 27

SPECIFICATIONS

Model	Voltage	AH 20 hr*	Constant Power Discharge Ratings - Watts Per Cell @ 77°F (25°C)								
			Operating Time (in minutes) to 1.67 Volts per Cell								
			5	10	15	20	30	40	50	60	90
UPS12-410MRXF	12	109	701.1	514.6	410.0	339.5	256.0	203.1	169.8	146.6	105.1
UPS12-830MRXF	12	251	1328.0	1029.2	830.0	713.0	460.1	422.0	390.7	341.9	242.8
UPS12-1000MRXF	12	254	1520.0	1210.0	1000.0	823.7	616.2	491.2	412.0	356.9	256.7

*True 20 hr rate to 1.75 VPC in Ampere-Hours

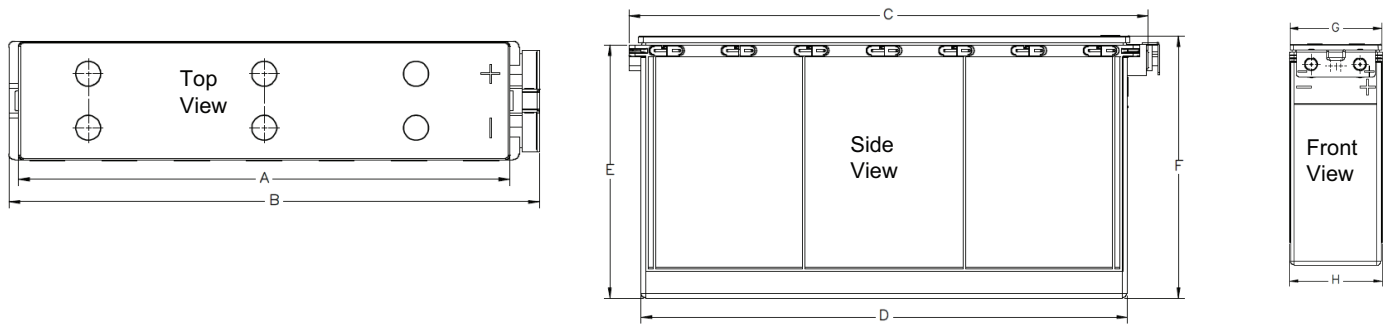
SPECIFICATIONS

Operating Temperature Range with temperature compensation	Discharge: -40°F (-40°C) to +160°F (71°C) Charge: -10°F (-23°C) to +140°F (60°C)
Nominal Operating Temperature Range	+74°F (23°C) to +80°F (27°C)
Recommended Maximum Charging Current Limit	C ₂₀ /5 amperes
Float Charging Voltage	13.5 to 13.8 VDC average per 12V unit @ 77°F (25°C)
Maximum AC Ripple (Charger)	0.5% RMS or 1.5% P-P of float charge voltage recommended for best results. Max voltage allowed = 1.4% RMS (4% P-P) Max current allowed = C/20 @ 20 Hr rate
Self Discharge	Battery can be stored up to 6 months at 77°F (25°C) before a freshening charge is required. Batteries stored at temperatures greater than 77°F (25°C) will require recharge sooner than batteries stored at lower temperatures. See C&D brochure 41-7272, Self-Discharge and Inventory Control for details.
Equalize charge and cycle service voltage	14.40 to 14.80 VDC average per 12V unit @ 77°F (25°C)
Terminal: Inserted - Inter-unit connector provided	Threaded copper alloy insert terminal to accept: M6 bolt (UPS12-410MRXF) M8 bolt (UPS12-830MRXF & UPS12-1000MRXF)
Terminal Hardware Initial Torque	110 in.-lbs. (12.4 N-m) for UPS12-410MRXF 160 in.-lbs. (18 N-m) for UPS12-830MRXF & UPS12-1000MRXF

SPECIFICATIONS

Battery Model	Nominal Voltage Per Unit	Ampere Hours Capacity 20 Hour Rate @ 77°F (25°C) to 1.75 Voltz/Cell	Ampere Hours Capacity 20 Hour Rate @ 68°F (20°C) to 1.80 Voltz/Cell	IEC Short Circuit Current (A)	IEC Resostance (m Ohms)*	Weight Lbs. (kg)
UPS12-410MRXF	12V	109	100	2860	4.4	81.8 (37.1)
UPS12-830MRXF	12V	251	229	5376	2.31	170 (77.3)
UPS12-1000MRXF	12V	254	234	5540	2.3	188 (85.2)

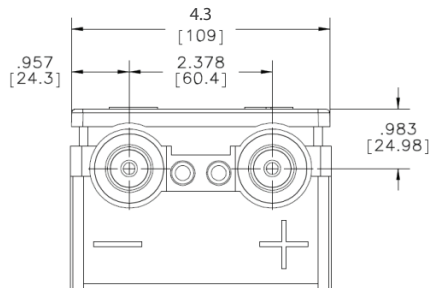
* Per IEEE 1188-2005, Internal ohmic values are useful as a trending tool. To these reading effectively, accurate baseline readings should be taken after six months of battery operation. Internal ohmic readings taken without the benefit of baseline date may be difficult to interpret and of limited value. Values are provided for reference only.



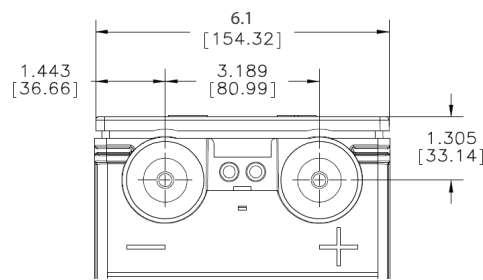
Model	A		B		C		D		E		F		G		H	
	in	mm	in	mm	in	mm	in	mm	in	mm	in	mm	in	mm	in	mm
UPS12-410MRXF	18.6	473.1	20.1	510.5	19.6	498.3	18.5	469.5	8.5	215.2	9.1	231.4	4.3	109.0	4.3	108.0
UPS12-830MRXF	20.3	516.9	22.0	558.5	21.5	546.5	20.2	512.2	12.2	310.8	12.7	322.1	6.1	154.3	6.0	152.7
UPS12-1000MRXF	20.3	516.9	22.0	558.5	21.5	546.5	20.2	512.2	12.2	310.8	12.7	322.1	6.1	154.3	6.0	152.7

*All dimensions in inches and [millimeters]. All dimensions are for reference only. Contact a C&D Representative for complete dimensions information.

DETAIL OF TERMINAL



UPS12-410MRXF



**UPS12-830MRXF
UPS12-1000MRXF**

UPS12-410MRXF

Constant Power Discharge Ratings - Watts Per Cell @ 77°F (25°C)										
Operating Time to End Point Voltage (in minutes)										
End Point Volts/Cell	5	10	15	20	30	40	45	50	60	90
1.75	660.1	484.4	386.0	321.2	244.0	195.3	178.3	164.3	142.7	102.4
1.70	690.8	507.0	404.0	334.4	252.0	200.5	182.6	167.9	145.3	104.2
1.67	701.1	514.6	410.0	339.5	256.0	203.1	184.6	169.8	146.6	105.1
1.65	709.7	520.8	415.0	344.1	260.0	205.7	186.9	171.6	147.9	106.0

Constant Power Discharge Ratings - Amperes @ 77°F (25°C)										
Operating Time to End Point Voltage (in minutes)										
End Point Volts/Cell	1	2	3	5	8	10	12	20	24	72
1.85	67	38.4	27.7	18.5	12.0	9.7	8.2	5.07	4.28	1.50
1.80	71	40.5	29.2	19.4	12.6	10.2	8.6	5.34	4.50	1.58
1.75	73	41.5	29.8	19.8	12.8	10.4	8.8	5.46	4.61	1.61

Additional ratings and application information are available in the Battery Selection Program found at www.cdstandbypower.net

UPS12-830MRXF

Constant Power Discharge Ratings - <i>Watts Per Cell @ 77°F (25°C)</i>										
Operating Time to End Point Voltage (in minutes)										
End Point Volts/Cell	5	10	15	20	30	40	45	50	60	90
1.75	1206.3	934.9	770.0	661.3	543.5	444.9	409.9	381.0	335.6	238.8
1.70	1268.2	995.0	800.5	688.9	558.5	454.2	417.3	386.9	339.4	241.3
1.67	1328.0	1029.2	830.0	713.0	567.9	460.1	422.0	390.7	341.9	242.8
1.65	1334.2	1034.0	833.9	717.5	573.0	463.3	424.7	392.9	343.4	244.0

Constant Power Discharge Ratings - <i>Amperes @ 77°F (25°C)</i>										
Operating Time to End Point Voltage (in minutes)										
End Point Volts/Cell	1	2	3	5	8	10	12	20	24	72
1.85	156	90.1	65.2	42.3	27.8	22.7	19.2	11.9	10.0	3.50
1.80	164	94.0	67.5	43.8	29.1	23.6	20.1	12.4	10.4	3.64
1.75	169	96.2	68.4	44.4	29.7	24.2	20.5	12.5	10.6	3.71

Additional ratings and application information are available in the Battery Selection Program found at www.cdstandbypower.net

UPS12-1000MRXF

Constant Power Discharge Ratings - <i>Watts Per Cell @ 77°F (25°C)</i>										
Operating Time to End Point Voltage (in minutes)										
End Point Volts/Cell	5	10	15	20	30	40	45	50	60	90
1.75	1379.8	1098.4	907.8	763.7	589.7	472.2	431.2	397.5	345.3	250.1
1.70	1469.0	1169.4	966.4	801.7	606.1	484.4	442.0	407.1	353.2	254.7
1.67	1520.0	1210.0	1000.0	823.7	616.2	491.2	447.7	412.0	356.9	256.7
1.65	1541.9	1227.5	1014.4	834.1	622.3	495.5	451.4	415.2	359.4	257.9

Constant Power Discharge Ratings - <i>Amperes @ 77°F (25°C)</i>										
Operating Time to End Point Voltage (in minutes)										
End Point Volts/Cell	1	2	3	5	8	10	12	20	24	72
1.85	168	96.1	67.9	43.2	28.1	22.9	19.4	12.05	10.18	3.56
1.80	181	102.0	71.3	45.0	29.3	23.9	20.2	12.50	10.60	3.71
1.75	188	104.1	72.1	45.4	29.7	24.3	20.6	12.70	10.70	3.75

Note: Batteries to be mounted with 0.5 in. (1.25 cm) spacing minimum and free air ventilation. Specifications subjects to change without notification. Above ratings do not include inter-unit connector voltage drops.

Additional ratings and application information are available in the Battery Selection Program found at www.cdstandbypower.net

TECHNOLOGIES, INC.

1400 Union Meeting Road
P.O. Box 3053 • Blue Bell, PA 19422-0858
(215) 619-2700 • Fax (215) 619-7899 • (800) 543-8630
customersvc@cdtechno.com
www.cdtechno.com

Any data, descriptions or specifications presented herein are subject to revision by C&D Technologies, Inc. without notice. While such information is believed to be accurate as indicated herein, C&D Technologies, Inc. makes no warranty and hereby disclaims all warranties, express or implied, with regard to the accuracy or completeness of such information. Further, because the product(s) featured herein may be used under conditions beyond its control, C&D Technologies, Inc. hereby disclaims all warranties, either express or implied, concerning the fitness or suitability of such product(s) for any particular use or in any specific application or arising from any course of dealing or usage of trade. The user is solely responsible for determining the suitability of the product(s) featured herein for user's intended purpose and in user's specific application.

Copyright 2012 C&D TECHNOLOGIES, INC. Printed in U.S.A. 12-1115 0317/CD