



data safe™
DXC

**PERFORMANCE
SPECIFICATIONS**



EnerSys™
Power/Full Solutions





The DataSafe™ DXC range of flooded lead calcium flat plate batteries has been designed for use in UPS applications, more specifically large data centers, which demand the highest levels of security and reliability. The proven reliability of DataSafe DXC as a leading high rate performance battery is backed by 20 + years of experience in the marketplace.

The DataSafe DXC is a high performance cycle resistant multi-cell calcium flat plate battery. Multi-cell construction requires fewer units, resulting in lower installation costs. While optimizing the space available in the battery room, it delivers superior performance making the DataSafe DXC a superlative cost-effective battery.

The DataSafe DXC features EnerSys' time tested Slide-Lock™ post seal design, wrapped positive plate, bolted lead plated copper connectors, optimal grid design, heavy duty plate lug and strap and dual lug design, which make this battery ideal for high rate applications.

All battery systems are rated at 100% capacity at initial discharge. The DataSafe DXC has a 20 year life expectancy in float service at 77°F (25°C) ambient temperature.

Features

- Capacity range: 0.594 - 5.088 kW per cell
- Suitable for UPS & Switchgear applications
- Multi-cell construction
- Cover made from flame retardant PVC
- Container made from styrene acrylonitrile (SAN), also flame retardant polycarbonate (PC) optional
- Long life Slide-Lock™ post seal design
- Cycling - wrapped positive plate for long cycle life

Standards

- Manufactured in EnerSys production facilities certified to ISO 9001: 2000
- Manufactured in EnerSys production facilities certified to ISO 14000: 1996
- Available testing to IEEE 450 standards as well as customer specific applications.

Specifications

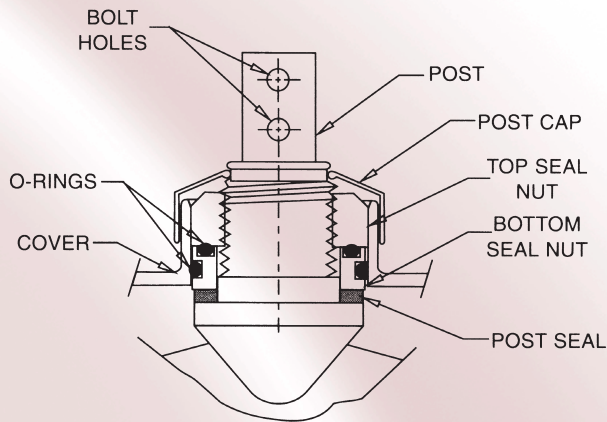
- Plate thickness:
Positive: 0.200 in/5.1 mm
Negative: 0.130 in/3.6 mm
- Plate suspension type:
Positive: Bridge hung
Negative: Bottom supported
- Container:
Styrene Acrylonitrile (SAN) Optional flame retardant polycarbonate (PC)
- Cover: Made from flame retardant PVC, UL94-VO/L.O.I. 28%
- Separators: Microporous plastic
- Bolt connectors: Stainless steel, English measure, Hex-Head
- Interunit connectors: Lead-plated copper
- Electrolyte over plates: 2.88 in/73.1 mm
- Vent type: Flame Arrestor, Fused Alumina
- Float voltage settings: Acceptable min/max: 2.17/2.26 Vpc, Recommended: 2.25 Vpc
- Sediment space: 1.04 in/26.4 mm
- Posts:
Lead-plated copper
DXC-5 to DXC-25 - one positive post and one negative post per cell.
DXC-27 to DXC-35 - two positive posts and two negative posts per cell.
- Post seal type: Slide-Lock™
- Specific gravity: 1.215 standard (1.250 available upon request)

General Specifications

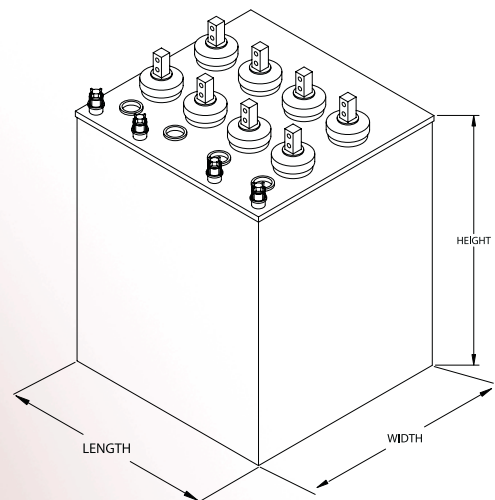
| Type* | Number of Cells | Nominal Voltage (V) | Watts/Cell | | Nominal Dimensions | | | | | | Weights - Volumes | | | | | | | |
|---------|-----------------|---------------------|--|--|--------------------|-------|-------|-------|--------|-------|-------------------|-------|-----------------|-------|---------------------------|-------|------|------|
| | | | 15 min. rate to 1.67Vpc @ 77°F (25°C) (1.215 S.G.) | 15 min. rate to 1.67Vpc @ 77°F (25°C) (1.250 S.G.) | Length** | | Width | | Height | | Unpacked | | Domestic Packed | | Electrolyte Only 1.215 sg | | | |
| | | | | | mm | in | mm | in | mm | in | kg | lbs | kg | lbs | kg | lbs | l | gal |
| 4DXC-5 | 4 | 8 | 594 | 653 | 241 | 9.50 | 406 | 16.00 | 558 | 22.00 | 116.4 | 256.0 | 119.5 | 263.0 | 36.4 | 80.0 | 28.4 | 7.5 |
| 4DXC-7 | 4 | 8 | 883 | 971 | 241 | 9.50 | 406 | 16.00 | 558 | 22.00 | 137.7 | 303.0 | 141.8 | 312.0 | 31.8 | 70.0 | 25.4 | 6.7 |
| 4DXC-9 | 4 | 8 | 1164 | 1280 | 241 | 9.50 | 406 | 16.00 | 558 | 22.00 | 160.5 | 353.0 | 152.7 | 363.0 | 28.6 | 63.0 | 22.7 | 6.0 |
| 4DXC-11 | 4 | 8 | 1464 | 1610 | 424 | 16.70 | 406 | 16.00 | 576 | 22.68 | 230.5 | 507.0 | 237.3 | 522.0 | 66.4 | 146.0 | 53.0 | 14.0 |
| 4DXC-13 | 4 | 8 | 1730 | 1903 | 424 | 16.70 | 406 | 16.00 | 576 | 22.68 | 253.2 | 557.0 | 260.4 | 573.0 | 62.7 | 138.0 | 49.2 | 13.0 |
| 4DXC-15 | 4 | 8 | 1987 | 2185 | 424 | 16.70 | 406 | 16.00 | 576 | 22.68 | 275.5 | 606.0 | 283.6 | 624.0 | 59.1 | 130.0 | 47.3 | 12.5 |
| 4DXC-17 | 4 | 8 | 2236 | 2459 | 424 | 16.70 | 406 | 16.00 | 576 | 22.68 | 298.2 | 656.0 | 306.8 | 675.0 | 55.4 | 122.0 | 44.7 | 11.8 |
| 4DXC-19 | 4 | 8 | 2515 | 2767 | 513 | 20.20 | 406 | 16.00 | 576 | 22.68 | 354.4 | 781.3 | 363.0 | 800.3 | 62.5 | 137.7 | 51.5 | 13.6 |
| 4DXC-21 | 4 | 8 | 2891 | 3180 | 513 | 20.20 | 406 | 16.00 | 576 | 22.68 | 376.6 | 830.3 | 385.2 | 849.3 | 59.2 | 130.5 | 48.8 | 12.9 |
| 2DXC-23 | 2 | 4 | 3099 | 3408 | 308 | 12.12 | 406 | 16.00 | 576 | 22.68 | 215.1 | 473.0 | 222.4 | 489.3 | 40.6 | 89.3 | 32.4 | 8.6 |
| 2DXC-25 | 2 | 4 | 3299 | 3628 | 308 | 12.12 | 406 | 16.00 | 576 | 22.68 | 227.0 | 499.3 | 234.2 | 515.3 | 38.8 | 85.3 | 31.0 | 8.2 |
| 2DXC-27 | 2 | 4 | 3702 | 4072 | 424 | 16.70 | 406 | 16.00 | 576 | 22.68 | 266.8 | 587.0 | 274.5 | 604.0 | 65.0 | 143.0 | 51.8 | 13.7 |
| 2DXC-29 | 2 | 4 | 3943 | 4337 | 424 | 16.70 | 406 | 16.00 | 576 | 22.68 | 278.6 | 613.0 | 287.2 | 632.0 | 63.1 | 139.0 | 50.3 | 13.3 |
| 2DXC-31 | 2 | 4 | 4176 | 4593 | 424 | 16.70 | 406 | 16.00 | 576 | 22.68 | 290.0 | 638.0 | 298.6 | 657.0 | 61.4 | 135.0 | 48.4 | 12.9 |
| 2DXC-33 | 2 | 4 | 4404 | 4844 | 424 | 16.70 | 406 | 16.00 | 576 | 22.68 | 301.4 | 663.0 | 310.0 | 682.0 | 59.1 | 130.0 | 47.3 | 12.5 |
| 2DXC-35 | 2 | 4 | 4626 | 5088 | 424 | 16.70 | 406 | 16.00 | 576 | 22.68 | 309.0 | 680.0 | 318.2 | 700.0 | 57.3 | 126.0 | 45.8 | 12.1 |

* Prefix indicates number of total cells per jar. Suffix number indicates total plates per cell.

** 0.25 inches must be added between units for spacing purposes when calculating total battery length.



Exclusive Slide-Lock™ Post Seal



1.250 Specific Gravity

Discharge Rates in kW per Cell** to 1.75Vpc at 25°C (77°F)*

| Type | Minutes | | | | | | | | | | | | | | Hours | | | |
|----------------|---------|-------|-------|-------|-------|-------|-------|-------|-------|-------|-------|-------|-------|-------|-------|-------|-------|-------|
| | 5 | 10 | 11 | 12 | 13 | 14 | 15 | 16 | 17 | 18 | 19 | 20 | 25 | 30 | 45 | 60 | 1.5 | 2 |
| DXC-5B | 0.833 | 0.697 | 0.675 | 0.654 | 0.634 | 0.615 | 0.597 | 0.581 | 0.565 | 0.550 | 0.536 | 0.522 | 0.462 | 0.415 | 0.326 | 0.255 | 0.186 | 0.156 |
| DXC-7B | 1.235 | 1.036 | 1.001 | 0.969 | 0.938 | 0.910 | 0.884 | 0.861 | 0.838 | 0.817 | 0.797 | 0.778 | 0.689 | 0.615 | 0.487 | 0.375 | 0.274 | 0.228 |
| DXC-9B | 1.632 | 1.368 | 1.321 | 1.277 | 1.237 | 1.200 | 1.166 | 1.135 | 1.107 | 1.080 | 1.054 | 1.029 | 0.909 | 0.813 | 0.692 | 0.492 | 0.356 | 0.294 |
| DXC-11B | 1.808 | 1.626 | 1.593 | 1.560 | 1.525 | 1.488 | 1.449 | 1.408 | 1.367 | 1.327 | 1.288 | 1.252 | 1.103 | 1.003 | 0.807 | 0.667 | 0.495 | 0.411 |
| DXC-13B | 2.171 | 1.929 | 1.889 | 1.848 | 1.806 | 1.763 | 1.718 | 1.672 | 1.625 | 1.580 | 1.535 | 1.493 | 1.318 | 1.195 | 0.964 | 0.787 | 0.587 | 0.486 |
| DXC-15B | 2.530 | 2.230 | 2.180 | 2.132 | 2.083 | 2.033 | 1.981 | 1.929 | 1.876 | 1.825 | 1.776 | 1.730 | 1.537 | 1.395 | 1.077 | 0.903 | 0.680 | 0.560 |
| DXC-17B | 2.892 | 2.519 | 2.460 | 2.403 | 2.347 | 2.292 | 2.236 | 2.181 | 2.126 | 2.072 | 2.020 | 1.970 | 1.751 | 1.580 | 1.238 | 1.015 | 0.768 | 0.631 |
| DXC-19B | 3.130 | 2.694 | 2.630 | 2.570 | 2.511 | 2.457 | 2.408 | 2.360 | 2.314 | 2.270 | 2.229 | 2.189 | 2.005 | 1.827 | 1.448 | 1.212 | 0.924 | 0.753 |
| DXC-21B | 3.651 | 3.143 | 3.059 | 2.982 | 2.913 | 2.847 | 2.784 | 2.724 | 2.655 | 2.592 | 2.530 | 2.471 | 2.208 | 2.006 | 1.598 | 1.339 | 1.010 | 0.817 |
| DXC-23B | 4.036 | 3.446 | 3.350 | 3.257 | 3.169 | 3.083 | 3.000 | 2.919 | 2.840 | 2.766 | 2.695 | 2.627 | 2.344 | 2.134 | 1.723 | 1.412 | 1.065 | 0.859 |
| DXC-25B | 4.352 | 3.725 | 3.620 | 3.520 | 3.424 | 3.331 | 3.241 | 3.153 | 3.069 | 2.989 | 2.912 | 2.840 | 2.534 | 2.306 | 1.846 | 1.513 | 1.162 | 0.937 |
| DXC-27B | 4.816 | 4.125 | 4.007 | 3.895 | 3.788 | 3.685 | 3.586 | 3.491 | 3.400 | 3.313 | 3.230 | 3.151 | 2.812 | 2.558 | 2.092 | 1.664 | 1.242 | 1.021 |
| DXC-29B | 5.125 | 4.440 | 4.274 | 4.153 | 4.038 | 3.927 | 3.821 | 3.720 | 3.623 | 3.530 | 3.442 | 3.359 | 3.000 | 2.729 | 2.210 | 1.761 | 1.307 | 1.068 |
| DXC-31B | 5.424 | 4.665 | 4.531 | 4.403 | 4.281 | 4.164 | 4.052 | 3.946 | 3.844 | 3.747 | 3.654 | 3.566 | 3.186 | 2.895 | 2.338 | 1.851 | 1.366 | 1.109 |
| DXC-33B | 5.718 | 4.926 | 4.784 | 4.648 | 4.519 | 4.396 | 4.278 | 4.166 | 4.059 | 3.957 | 3.861 | 3.768 | 3.367 | 3.058 | 2.460 | 1.938 | 1.421 | 1.148 |
| DXC-35B | 6.003 | 5.181 | 5.031 | 4.888 | 4.751 | 4.621 | 4.497 | 4.379 | 4.267 | 4.160 | 4.059 | 3.962 | 3.544 | 3.220 | 2.561 | 2.023 | 1.474 | 1.184 |

1.250 Specific Gravity

Discharge Rates in kW per Cell** to 1.67Vpc at 25°C (77°F)*

| Type | Minutes | | | | | | | | | | | | | | Hours | | | |
|----------------|---------|-------|-------|-------|-------|-------|-------|-------|-------|-------|-------|-------|-------|-------|-------|-------|-------|-------|
| | 5 | 10 | 11 | 12 | 13 | 14 | 15 | 16 | 17 | 18 | 19 | 20 | 25 | 30 | 45 | 60 | 1.5 | 2 |
| DXC-5B | 0.908 | 0.758 | 0.735 | 0.713 | 0.693 | 0.673 | 0.653 | 0.634 | 0.616 | 0.599 | 0.582 | 0.567 | 0.501 | 0.451 | 0.344 | 0.265 | 0.187 | 0.156 |
| DXC-7B | 1.350 | 1.124 | 1.091 | 1.059 | 1.029 | 1.000 | 0.971 | 0.943 | 0.917 | 0.891 | 0.866 | 0.843 | 0.744 | 0.669 | 0.509 | 0.393 | 0.275 | 0.228 |
| DXC-9B | 1.785 | 1.483 | 1.437 | 1.395 | 1.355 | 1.317 | 1.280 | 1.245 | 1.212 | 1.179 | 1.148 | 1.117 | 0.982 | 0.882 | 0.729 | 0.515 | 0.358 | 0.294 |
| DXC-11B | 2.154 | 1.891 | 1.832 | 1.774 | 1.718 | 1.663 | 1.610 | 1.560 | 1.512 | 1.467 | 1.425 | 1.385 | 1.220 | 1.099 | 0.846 | 0.678 | 0.497 | 0.411 |
| DXC-13B | 2.585 | 2.239 | 2.166 | 2.096 | 2.028 | 1.964 | 1.903 | 1.845 | 1.791 | 1.740 | 1.691 | 1.645 | 1.450 | 1.299 | 1.000 | 0.804 | 0.591 | 0.486 |
| DXC-15B | 3.016 | 2.580 | 2.493 | 2.410 | 2.331 | 2.256 | 2.185 | 2.120 | 2.057 | 1.999 | 1.944 | 1.893 | 1.675 | 1.505 | 1.135 | 0.927 | 0.684 | 0.560 |
| DXC-17B | 3.447 | 2.908 | 2.808 | 2.712 | 2.622 | 2.538 | 2.459 | 2.387 | 2.319 | 2.255 | 2.195 | 2.139 | 1.900 | 1.707 | 1.280 | 1.047 | 0.772 | 0.631 |
| DXC-19B | 4.007 | 3.244 | 3.133 | 3.028 | 2.935 | 2.848 | 2.767 | 2.692 | 2.622 | 2.558 | 2.495 | 2.437 | 2.184 | 1.977 | 1.537 | 1.263 | 0.943 | 0.765 |
| DXC-21B | 4.413 | 3.750 | 3.615 | 3.494 | 3.380 | 3.275 | 3.180 | 3.091 | 3.006 | 2.927 | 2.852 | 2.782 | 2.468 | 2.217 | 1.713 | 1.404 | 1.049 | 0.842 |
| DXC-23B | 4.716 | 3.969 | 3.845 | 3.728 | 3.616 | 3.510 | 3.408 | 3.312 | 3.220 | 3.132 | 3.048 | 2.968 | 2.625 | 2.352 | 1.792 | 1.440 | 1.073 | 0.859 |
| DXC-25B | 5.094 | 4.282 | 4.132 | 3.991 | 3.860 | 3.739 | 3.628 | 3.528 | 3.434 | 3.347 | 3.264 | 3.186 | 2.835 | 2.537 | 1.932 | 1.550 | 1.168 | 0.937 |
| DXC-27B | 5.651 | 4.740 | 4.591 | 4.451 | 4.318 | 4.192 | 4.072 | 3.958 | 3.849 | 3.745 | 3.646 | 3.552 | 3.142 | 2.809 | 2.112 | 1.714 | 1.247 | 1.021 |
| DXC-29B | 6.026 | 5.050 | 4.891 | 4.741 | 4.599 | 4.465 | 4.337 | 4.216 | 4.100 | 3.990 | 3.885 | 3.785 | 3.350 | 2.994 | 2.234 | 1.821 | 1.315 | 1.068 |
| DXC-31B | 6.392 | 5.350 | 5.181 | 5.022 | 4.871 | 4.729 | 4.593 | 4.465 | 4.343 | 4.227 | 4.116 | 4.011 | 3.551 | 3.171 | 2.350 | 1.922 | 1.372 | 1.109 |
| DXC-33B | 6.756 | 5.645 | 5.465 | 5.296 | 5.137 | 4.986 | 4.844 | 4.710 | 4.582 | 4.461 | 4.345 | 4.235 | 3.751 | 3.347 | 2.467 | 2.023 | 1.429 | 1.148 |
| DXC-35B | 7.108 | 5.932 | 5.742 | 5.563 | 5.396 | 5.238 | 5.088 | 4.947 | 4.814 | 4.687 | 4.566 | 4.450 | 3.945 | 3.519 | 2.575 | 2.119 | 1.482 | 1.184 |

*kW values listed represent 100% of the initial capacity.
 **At 77°F (25°C) includes intercell connector drop.
 All data subject to change without notice.

1.250 Specific Gravity

Discharge Rates in kW per Cell** to 1.63Vpc at 25°C (77°F)*

| Type | Minutes | | | | | | | | | | | | | | | | Hours | |
|----------------|---------|-------|-------|-------|-------|-------|-------|-------|-------|-------|-------|-------|-------|-------|-------|-------|-------|-------|
| | 5 | 10 | 11 | 12 | 13 | 14 | 15 | 16 | 17 | 18 | 19 | 20 | 25 | 30 | 45 | 60 | 1.5 | 2 |
| DXC-5B | 0.921 | 0.771 | 0.747 | 0.725 | 0.704 | 0.683 | 0.663 | 0.644 | 0.626 | 0.608 | 0.592 | 0.576 | 0.507 | 0.454 | 0.347 | 0.266 | 0.187 | 0.156 |
| DXC-7B | 1.368 | 1.146 | 1.110 | 1.077 | 1.045 | 1.015 | 0.986 | 0.957 | 0.930 | 0.904 | 0.879 | 0.856 | 0.753 | 0.674 | 0.513 | 0.393 | 0.275 | 0.228 |
| DXC-9B | 1.807 | 1.514 | 1.466 | 1.422 | 1.380 | 1.339 | 1.301 | 1.265 | 1.230 | 1.196 | 1.165 | 1.135 | 1.008 | 0.917 | 0.735 | 0.515 | 0.358 | 0.294 |
| DXC-11B | 2.249 | 1.936 | 1.875 | 1.815 | 1.758 | 1.702 | 1.649 | 1.597 | 1.548 | 1.502 | 1.458 | 1.416 | 1.239 | 1.107 | 0.852 | 0.678 | 0.497 | 0.411 |
| DXC-13B | 2.698 | 2.299 | 2.222 | 2.149 | 2.079 | 2.012 | 1.950 | 1.890 | 1.834 | 1.781 | 1.731 | 1.683 | 1.476 | 1.315 | 1.007 | 0.805 | 0.591 | 0.486 |
| DXC-15B | 3.149 | 2.656 | 2.563 | 2.476 | 2.393 | 2.315 | 2.242 | 2.174 | 2.111 | 2.051 | 1.994 | 1.941 | 1.706 | 1.517 | 1.144 | 0.929 | 0.684 | 0.560 |
| DXC-17B | 3.598 | 3.003 | 2.894 | 2.791 | 2.695 | 2.606 | 2.524 | 2.449 | 2.379 | 2.314 | 2.252 | 2.194 | 1.936 | 1.722 | 1.290 | 1.048 | 0.772 | 0.631 |
| DXC-19B | 4.210 | 3.461 | 3.325 | 3.205 | 3.095 | 2.993 | 2.901 | 2.814 | 2.731 | 2.658 | 2.587 | 2.520 | 2.235 | 2.005 | 1.541 | 1.263 | 0.943 | 0.765 |
| DXC-21B | 4.687 | 3.955 | 3.812 | 3.678 | 3.552 | 3.432 | 3.320 | 3.216 | 3.121 | 3.031 | 2.946 | 2.866 | 2.517 | 2.254 | 1.730 | 1.407 | 1.049 | 0.842 |
| DXC-23B | 4.930 | 4.105 | 3.964 | 3.833 | 3.709 | 3.593 | 3.485 | 3.383 | 3.288 | 3.197 | 3.111 | 3.030 | 2.669 | 2.376 | 1.806 | 1.442 | 1.073 | 0.859 |
| DXC-25B | 5.328 | 4.435 | 4.283 | 4.139 | 4.005 | 3.880 | 3.763 | 3.654 | 3.551 | 3.454 | 3.362 | 3.274 | 2.884 | 2.564 | 1.946 | 1.553 | 1.168 | 0.937 |
| DXC-27B | 5.907 | 4.917 | 4.748 | 4.589 | 4.440 | 4.302 | 4.173 | 4.053 | 3.940 | 3.833 | 3.731 | 3.634 | 3.200 | 2.839 | 2.128 | 1.716 | 1.247 | 1.021 |
| DXC-29B | 6.301 | 5.245 | 5.064 | 4.894 | 4.735 | 4.588 | 4.450 | 4.323 | 4.203 | 4.089 | 3.981 | 3.878 | 3.414 | 3.023 | 2.251 | 1.822 | 1.315 | 1.068 |
| DXC-31B | 6.686 | 5.563 | 5.371 | 5.190 | 5.022 | 4.866 | 4.721 | 4.586 | 4.459 | 4.340 | 4.226 | 4.116 | 3.622 | 3.201 | 2.368 | 1.924 | 1.372 | 1.109 |
| DXC-33B | 7.064 | 5.878 | 5.674 | 5.482 | 5.303 | 5.138 | 4.985 | 4.843 | 4.710 | 4.585 | 4.465 | 4.351 | 3.829 | 3.378 | 2.487 | 2.025 | 1.429 | 1.148 |
| DXC-35B | 7.434 | 6.186 | 5.969 | 5.767 | 5.578 | 5.404 | 5.243 | 5.095 | 4.956 | 4.824 | 4.699 | 4.578 | 4.028 | 3.547 | 2.595 | 2.121 | 1.482 | 1.184 |

1.250 Specific Gravity

Discharge Rates in kW per Cell** to 1.60Vpc at 25°C (77°F)*

| Type | Minutes | | | | | | | | | | | | | | | | Hours | |
|----------------|---------|-------|-------|-------|-------|-------|-------|-------|-------|-------|-------|-------|-------|-------|-------|-------|-------|-------|
| | 5 | 10 | 11 | 12 | 13 | 14 | 15 | 16 | 17 | 18 | 19 | 20 | 25 | 30 | 45 | 60 | 1.5 | 2 |
| DXC-5B | 0.932 | 0.781 | 0.757 | 0.734 | 0.712 | 0.691 | 0.671 | 0.652 | 0.633 | 0.615 | 0.598 | 0.582 | 0.512 | 0.457 | 0.349 | 0.266 | 0.187 | 0.156 |
| DXC-7B | 1.382 | 1.162 | 1.125 | 1.091 | 1.058 | 1.027 | 0.997 | 0.968 | 0.941 | 0.914 | 0.889 | 0.865 | 0.760 | 0.678 | 0.516 | 0.394 | 0.275 | 0.228 |
| DXC-9B | 1.824 | 1.537 | 1.488 | 1.442 | 1.398 | 1.356 | 1.317 | 1.279 | 1.243 | 1.210 | 1.178 | 1.149 | 1.027 | 0.943 | 0.739 | 0.516 | 0.358 | 0.294 |
| DXC-11B | 2.320 | 1.969 | 1.906 | 1.846 | 1.788 | 1.732 | 1.678 | 1.625 | 1.576 | 1.528 | 1.483 | 1.440 | 1.254 | 1.113 | 0.857 | 0.679 | 0.497 | 0.411 |
| DXC-13B | 2.783 | 2.344 | 2.265 | 2.189 | 2.117 | 2.049 | 1.984 | 1.924 | 1.866 | 1.812 | 1.760 | 1.711 | 1.496 | 1.327 | 1.013 | 0.805 | 0.591 | 0.486 |
| DXC-15B | 3.248 | 2.713 | 2.616 | 2.525 | 2.439 | 2.359 | 2.285 | 2.216 | 2.151 | 2.090 | 2.032 | 1.976 | 1.729 | 1.526 | 1.151 | 0.930 | 0.684 | 0.560 |
| DXC-17B | 3.711 | 3.075 | 2.959 | 2.850 | 2.749 | 2.657 | 2.573 | 2.496 | 2.425 | 2.359 | 2.295 | 2.235 | 1.964 | 1.733 | 1.298 | 1.049 | 0.772 | 0.631 |
| DXC-19B | 4.357 | 3.581 | 3.435 | 3.301 | 3.183 | 3.073 | 2.972 | 2.880 | 2.792 | 2.710 | 2.633 | 2.562 | 2.256 | 2.010 | 1.541 | 1.263 | 0.943 | 0.765 |
| DXC-21B | 4.890 | 4.061 | 3.918 | 3.774 | 3.641 | 3.512 | 3.391 | 3.279 | 3.176 | 3.078 | 2.987 | 2.902 | 2.537 | 2.263 | 1.730 | 1.407 | 1.049 | 0.842 |
| DXC-23B | 5.091 | 4.206 | 4.054 | 3.911 | 3.779 | 3.656 | 3.542 | 3.437 | 3.339 | 3.246 | 3.159 | 3.075 | 2.703 | 2.395 | 1.816 | 1.443 | 1.073 | 0.859 |
| DXC-25B | 5.503 | 4.550 | 4.395 | 4.251 | 4.115 | 3.986 | 3.864 | 3.749 | 3.639 | 3.535 | 3.435 | 3.340 | 2.921 | 2.584 | 1.957 | 1.555 | 1.168 | 0.937 |
| DXC-27B | 6.100 | 5.050 | 4.865 | 4.692 | 4.532 | 4.384 | 4.248 | 4.123 | 4.007 | 3.898 | 3.794 | 3.695 | 3.244 | 2.861 | 2.141 | 1.717 | 1.247 | 1.021 |
| DXC-29B | 6.508 | 5.391 | 5.194 | 5.009 | 4.837 | 4.680 | 4.535 | 4.403 | 4.280 | 4.164 | 4.054 | 3.948 | 3.463 | 3.045 | 2.264 | 1.824 | 1.315 | 1.068 |
| DXC-31B | 6.906 | 5.723 | 5.514 | 5.317 | 5.135 | 4.968 | 4.816 | 4.676 | 4.547 | 4.424 | 4.308 | 4.195 | 3.676 | 3.223 | 2.382 | 1.926 | 1.372 | 1.109 |
| DXC-33B | 7.295 | 6.053 | 5.830 | 5.621 | 5.428 | 5.251 | 5.090 | 4.943 | 4.807 | 4.678 | 4.556 | 4.438 | 3.887 | 3.401 | 2.501 | 2.027 | 1.429 | 1.148 |
| DXC-35B | 7.678 | 6.376 | 6.140 | 5.919 | 5.715 | 5.529 | 5.359 | 5.205 | 5.062 | 4.927 | 4.798 | 4.674 | 4.090 | 3.568 | 2.609 | 2.123 | 1.482 | 1.184 |

*kW values listed represent 100% of the initial capacity.
 **At 77°F (25°C) includes intercell connector drop.
 All data subject to change without notice.

1.215 Specific Gravity

Discharge Rates in kW per Cell** to 1.75Vpc at 25°C (77°F)*

| Type | Minutes | | | | | | | | | | | | | | | Hours | | |
|---------------|---------|-------|-------|-------|-------|-------|-------|-------|-------|-------|-------|-------|-------|-------|-------|-------|-------|-------|
| | 5 | 10 | 11 | 12 | 13 | 14 | 15 | 16 | 17 | 18 | 19 | 20 | 25 | 30 | 45 | 60 | 1.5 | 2 |
| DXC-5 | 0.757 | 0.634 | 0.614 | 0.594 | 0.576 | 0.559 | 0.543 | 0.528 | 0.514 | 0.500 | 0.487 | 0.475 | 0.420 | 0.377 | 0.296 | 0.232 | 0.169 | 0.142 |
| DXC-7 | 1.123 | 0.942 | 0.910 | 0.881 | 0.853 | 0.828 | 0.804 | 0.782 | 0.762 | 0.743 | 0.725 | 0.707 | 0.626 | 0.559 | 0.443 | 0.341 | 0.249 | 0.207 |
| DXC-9 | 1.484 | 1.244 | 1.201 | 1.161 | 1.124 | 1.091 | 1.060 | 1.032 | 1.006 | 0.982 | 0.958 | 0.935 | 0.826 | 0.739 | 0.629 | 0.447 | 0.324 | 0.267 |
| DXC-11 | 1.644 | 1.478 | 1.448 | 1.418 | 1.386 | 1.353 | 1.317 | 1.280 | 1.243 | 1.206 | 1.171 | 1.138 | 1.003 | 0.912 | 0.734 | 0.606 | 0.450 | 0.374 |
| DXC-13 | 1.974 | 1.754 | 1.717 | 1.680 | 1.642 | 1.603 | 1.562 | 1.520 | 1.478 | 1.436 | 1.396 | 1.358 | 1.198 | 1.086 | 0.876 | 0.715 | 0.534 | 0.442 |
| DXC-15 | 2.300 | 2.027 | 1.982 | 1.938 | 1.894 | 1.848 | 1.801 | 1.753 | 1.706 | 1.659 | 1.615 | 1.572 | 1.397 | 1.268 | 0.979 | 0.821 | 0.618 | 0.509 |
| DXC-17 | 2.629 | 2.290 | 2.236 | 2.185 | 2.134 | 2.084 | 2.033 | 1.983 | 1.933 | 1.884 | 1.837 | 1.791 | 1.592 | 1.436 | 1.125 | 0.923 | 0.698 | 0.574 |
| DXC-19 | 2.845 | 2.449 | 2.391 | 2.336 | 2.283 | 2.234 | 2.189 | 2.145 | 2.104 | 2.064 | 2.026 | 1.990 | 1.823 | 1.661 | 1.316 | 1.102 | 0.840 | 0.684 |
| DXC-21 | 3.319 | 2.857 | 2.781 | 2.711 | 2.648 | 2.588 | 2.531 | 2.476 | 2.414 | 2.356 | 2.300 | 2.246 | 2.007 | 1.824 | 1.453 | 1.217 | 0.918 | 0.742 |
| DXC-23 | 3.669 | 3.133 | 3.045 | 2.961 | 2.881 | 2.803 | 2.727 | 2.653 | 2.582 | 2.514 | 2.450 | 2.389 | 2.131 | 1.940 | 1.566 | 1.284 | 0.968 | 0.781 |
| DXC-25 | 3.956 | 3.386 | 3.291 | 3.200 | 3.113 | 3.028 | 2.946 | 2.867 | 2.790 | 2.717 | 2.647 | 2.582 | 2.304 | 2.096 | 1.678 | 1.375 | 1.056 | 0.852 |
| DXC-27 | 4.378 | 3.750 | 3.643 | 3.541 | 3.443 | 3.350 | 3.260 | 3.174 | 3.091 | 3.012 | 2.937 | 2.865 | 2.556 | 2.325 | 1.902 | 1.513 | 1.129 | 0.928 |
| DXC-29 | 4.659 | 4.000 | 3.885 | 3.776 | 3.671 | 3.570 | 3.474 | 3.382 | 3.294 | 3.209 | 3.129 | 3.053 | 2.727 | 2.481 | 2.009 | 1.601 | 1.188 | 0.971 |
| DXC-31 | 4.931 | 4.241 | 4.119 | 4.003 | 3.892 | 3.786 | 3.684 | 3.587 | 3.494 | 3.406 | 3.322 | 3.242 | 2.896 | 2.632 | 2.125 | 1.683 | 1.242 | 1.008 |
| DXC-33 | 5.198 | 4.478 | 4.349 | 4.226 | 4.108 | 3.996 | 3.889 | 3.787 | 3.690 | 3.598 | 3.510 | 3.426 | 3.061 | 2.780 | 2.236 | 1.762 | 1.292 | 1.044 |
| DXC-35 | 5.457 | 4.710 | 4.574 | 4.444 | 4.319 | 4.201 | 4.088 | 3.981 | 3.879 | 3.782 | 3.690 | 3.602 | 3.222 | 2.927 | 2.328 | 1.839 | 1.340 | 1.076 |

1.215 Specific Gravity

Discharge Rates in kW per Cell** to 1.67Vpc at 25°C (77°F)*

| Type | Minutes | | | | | | | | | | | | | | | Hours | | |
|---------------|---------|-------|-------|-------|-------|-------|-------|-------|-------|-------|-------|-------|-------|-------|-------|-------|-------|-------|
| | 5 | 10 | 11 | 12 | 13 | 14 | 15 | 16 | 17 | 18 | 19 | 20 | 25 | 30 | 45 | 60 | 1.5 | 2 |
| DXC-5 | 0.825 | 0.689 | 0.668 | 0.649 | 0.630 | 0.612 | 0.594 | 0.577 | 0.560 | 0.545 | 0.529 | 0.515 | 0.455 | 0.410 | 0.313 | 0.241 | 0.170 | 0.142 |
| DXC-7 | 1.227 | 1.022 | 0.992 | 0.963 | 0.935 | 0.909 | 0.883 | 0.858 | 0.833 | 0.810 | 0.787 | 0.766 | 0.676 | 0.608 | 0.463 | 0.357 | 0.250 | 0.207 |
| DXC-9 | 1.623 | 1.348 | 1.307 | 1.268 | 1.232 | 1.197 | 1.164 | 1.132 | 1.101 | 1.072 | 1.043 | 1.016 | 0.893 | 0.802 | 0.663 | 0.468 | 0.325 | 0.267 |
| DXC-11 | 1.958 | 1.719 | 1.666 | 1.613 | 1.562 | 1.512 | 1.464 | 1.418 | 1.375 | 1.334 | 1.295 | 1.259 | 1.109 | 0.999 | 0.769 | 0.616 | 0.452 | 0.374 |
| DXC-13 | 2.350 | 2.035 | 1.969 | 1.905 | 1.844 | 1.785 | 1.730 | 1.678 | 1.628 | 1.581 | 1.537 | 1.496 | 1.318 | 1.181 | 0.909 | 0.731 | 0.537 | 0.442 |
| DXC-15 | 2.742 | 2.345 | 2.267 | 2.191 | 2.119 | 2.051 | 1.987 | 1.927 | 1.870 | 1.817 | 1.768 | 1.721 | 1.523 | 1.368 | 1.032 | 0.843 | 0.622 | 0.509 |
| DXC-17 | 3.134 | 2.644 | 2.553 | 2.466 | 2.384 | 2.307 | 2.236 | 2.170 | 2.108 | 2.050 | 1.996 | 1.945 | 1.727 | 1.552 | 1.164 | 0.952 | 0.702 | 0.574 |
| DXC-19 | 3.643 | 2.949 | 2.848 | 2.753 | 2.668 | 2.589 | 2.515 | 2.447 | 2.384 | 2.325 | 2.268 | 2.215 | 1.985 | 1.797 | 1.397 | 1.148 | 0.857 | 0.696 |
| DXC-21 | 4.012 | 3.409 | 3.286 | 3.176 | 3.073 | 2.977 | 2.891 | 2.810 | 2.733 | 2.661 | 2.593 | 2.529 | 2.244 | 2.015 | 1.557 | 1.276 | 0.953 | 0.766 |
| DXC-23 | 4.287 | 3.608 | 3.495 | 3.389 | 3.288 | 3.191 | 3.099 | 3.011 | 2.927 | 2.847 | 2.771 | 2.699 | 2.386 | 2.138 | 1.629 | 1.309 | 0.975 | 0.781 |
| DXC-25 | 4.631 | 3.893 | 3.757 | 3.628 | 3.509 | 3.399 | 3.299 | 3.207 | 3.122 | 3.043 | 2.968 | 2.896 | 2.577 | 2.306 | 1.756 | 1.409 | 1.062 | 0.852 |
| DXC-27 | 5.137 | 4.309 | 4.174 | 4.046 | 3.926 | 3.811 | 3.702 | 3.598 | 3.499 | 3.405 | 3.315 | 3.229 | 2.856 | 2.554 | 1.920 | 1.558 | 1.134 | 0.928 |
| DXC-29 | 5.478 | 4.591 | 4.446 | 4.310 | 4.181 | 4.059 | 3.943 | 3.833 | 3.727 | 3.627 | 3.532 | 3.441 | 3.045 | 2.722 | 2.031 | 1.655 | 1.195 | 0.971 |
| DXC-31 | 5.811 | 4.864 | 4.710 | 4.565 | 4.428 | 4.299 | 4.176 | 4.059 | 3.948 | 3.843 | 3.742 | 3.646 | 3.228 | 2.883 | 2.136 | 1.747 | 1.247 | 1.008 |
| DXC-33 | 6.142 | 5.132 | 4.968 | 4.814 | 4.670 | 4.533 | 4.404 | 4.282 | 4.166 | 4.055 | 3.950 | 3.850 | 3.410 | 3.043 | 2.243 | 1.839 | 1.299 | 1.044 |
| DXC-35 | 6.462 | 5.393 | 5.220 | 5.058 | 4.905 | 4.762 | 4.626 | 4.498 | 4.376 | 4.261 | 4.151 | 4.046 | 3.586 | 3.199 | 2.341 | 1.926 | 1.347 | 1.076 |

*kW values listed represent 100% of the initial capacity.
 **At 77°F (25°C) includes intercell connector drop.
 All data subject to change without notice.

1.215 Specific Gravity

Discharge Rates in kW per Cell** to 1.63Vpc at 25°C (77°F)*

| Type | Minutes | | | | | | | | | | | | | | | | Hours | |
|---------------|---------|-------|-------|-------|-------|-------|-------|-------|-------|-------|-------|-------|-------|-------|-------|-------|-------|-------|
| | 5 | 10 | 11 | 12 | 13 | 14 | 15 | 16 | 17 | 18 | 19 | 20 | 25 | 30 | 45 | 60 | 1.5 | 2 |
| DXC-5 | 0.838 | 0.701 | 0.680 | 0.659 | 0.640 | 0.621 | 0.603 | 0.586 | 0.569 | 0.553 | 0.538 | 0.523 | 0.461 | 0.413 | 0.315 | 0.242 | 0.170 | 0.142 |
| DXC-7 | 1.244 | 1.041 | 1.009 | 0.979 | 0.950 | 0.923 | 0.896 | 0.870 | 0.846 | 0.822 | 0.799 | 0.778 | 0.685 | 0.613 | 0.466 | 0.358 | 0.250 | 0.207 |
| DXC-9 | 1.643 | 1.376 | 1.333 | 1.293 | 1.254 | 1.218 | 1.183 | 1.150 | 1.118 | 1.088 | 1.059 | 1.032 | 0.916 | 0.833 | 0.668 | 0.469 | 0.325 | 0.267 |
| DXC-11 | 2.044 | 1.760 | 1.704 | 1.650 | 1.598 | 1.547 | 1.499 | 1.452 | 1.408 | 1.365 | 1.325 | 1.287 | 1.127 | 1.006 | 0.775 | 0.617 | 0.452 | 0.374 |
| DXC-13 | 2.453 | 2.090 | 2.020 | 1.954 | 1.890 | 1.829 | 1.772 | 1.718 | 1.667 | 1.619 | 1.573 | 1.530 | 1.342 | 1.195 | 0.916 | 0.732 | 0.537 | 0.442 |
| DXC-15 | 2.863 | 2.414 | 2.330 | 2.251 | 2.175 | 2.104 | 2.038 | 1.977 | 1.919 | 1.865 | 1.813 | 1.764 | 1.551 | 1.379 | 1.040 | 0.844 | 0.622 | 0.509 |
| DXC-17 | 3.271 | 2.730 | 2.631 | 2.537 | 2.450 | 2.369 | 2.295 | 2.227 | 2.163 | 2.104 | 2.048 | 1.995 | 1.760 | 1.565 | 1.173 | 0.953 | 0.702 | 0.574 |
| DXC-19 | 3.827 | 3.146 | 3.023 | 2.914 | 2.814 | 2.721 | 2.637 | 2.558 | 2.483 | 2.416 | 2.352 | 2.291 | 2.032 | 1.823 | 1.401 | 1.148 | 0.857 | 0.696 |
| DXC-21 | 4.261 | 3.595 | 3.465 | 3.344 | 3.229 | 3.120 | 3.018 | 2.924 | 2.837 | 2.755 | 2.678 | 2.605 | 2.288 | 2.049 | 1.573 | 1.279 | 0.953 | 0.766 |
| DXC-23 | 4.482 | 3.731 | 3.604 | 3.484 | 3.372 | 3.267 | 3.168 | 3.076 | 2.989 | 2.907 | 2.829 | 2.754 | 2.427 | 2.160 | 1.642 | 1.311 | 0.975 | 0.781 |
| DXC-25 | 4.844 | 4.032 | 3.893 | 3.763 | 3.641 | 3.528 | 3.421 | 3.322 | 3.229 | 3.140 | 3.056 | 2.976 | 2.622 | 2.331 | 1.769 | 1.412 | 1.062 | 0.852 |
| DXC-27 | 5.370 | 4.470 | 4.316 | 4.172 | 4.037 | 3.911 | 3.793 | 3.684 | 3.581 | 3.484 | 3.392 | 3.303 | 2.209 | 2.581 | 1.935 | 1.560 | 1.134 | 0.928 |
| DXC-29 | 5.728 | 4.768 | 4.604 | 4.449 | 4.305 | 4.171 | 4.046 | 3.930 | 3.821 | 3.718 | 3.620 | 3.526 | 3.104 | 2.748 | 2.046 | 1.657 | 1.195 | 0.971 |
| DXC-31 | 6.078 | 5.058 | 4.883 | 4.719 | 4.566 | 4.423 | 4.291 | 4.169 | 4.054 | 3.945 | 3.842 | 3.742 | 3.293 | 2.910 | 2.153 | 1.749 | 1.247 | 1.008 |
| DXC-33 | 6.422 | 5.344 | 5.158 | 4.983 | 4.821 | 4.671 | 4.531 | 4.403 | 4.282 | 4.168 | 4.059 | 3.955 | 3.481 | 3.071 | 2.261 | 1.841 | 1.299 | 1.044 |
| DXC-35 | 6.758 | 5.623 | 5.427 | 5.243 | 5.071 | 4.913 | 4.767 | 4.631 | 4.505 | 4.386 | 4.271 | 4.162 | 3.661 | 3.225 | 2.359 | 1.928 | 1.347 | 1.076 |

1.215 Specific Gravity

Discharge Rates in kW per Cell** to 1.60Vpc at 25°C (77°F)*

| Type | Minutes | | | | | | | | | | | | | | | | Hours | |
|---------------|---------|-------|-------|-------|-------|-------|-------|-------|-------|-------|-------|-------|-------|-------|-------|-------|-------|-------|
| | 5 | 10 | 11 | 12 | 13 | 14 | 15 | 16 | 17 | 18 | 19 | 20 | 25 | 30 | 45 | 60 | 1.5 | 2 |
| DXC-5 | 0.847 | 0.710 | 0.688 | 0.667 | 0.647 | 0.628 | 0.610 | 0.592 | 0.576 | 0.559 | 0.544 | 0.529 | 0.465 | 0.415 | 0.317 | 0.242 | 0.170 | 0.142 |
| DXC-7 | 1.256 | 1.056 | 1.023 | 0.992 | 0.962 | 0.933 | 0.906 | 0.880 | 0.855 | 0.831 | 0.808 | 0.787 | 0.691 | 0.616 | 0.469 | 0.358 | 0.250 | 0.207 |
| DXC-9 | 1.658 | 1.397 | 1.353 | 1.311 | 1.271 | 1.233 | 1.197 | 1.163 | 1.130 | 1.100 | 1.071 | 1.044 | 0.934 | 0.857 | 0.672 | 0.469 | 0.325 | 0.267 |
| DXC-11 | 2.109 | 1.790 | 1.733 | 1.678 | 1.625 | 1.574 | 1.525 | 1.478 | 1.432 | 1.389 | 1.348 | 1.309 | 1.140 | 1.012 | 0.779 | 0.617 | 0.452 | 0.374 |
| DXC-13 | 2.530 | 2.131 | 2.059 | 1.990 | 1.924 | 1.862 | 1.804 | 1.749 | 1.697 | 1.647 | 1.600 | 1.556 | 1.360 | 1.206 | 0.921 | 0.732 | 0.537 | 0.442 |
| DXC-15 | 2.953 | 2.466 | 2.378 | 2.295 | 2.217 | 2.145 | 2.077 | 2.014 | 1.956 | 1.900 | 1.847 | 1.797 | 1.572 | 1.387 | 1.046 | 0.845 | 0.622 | 0.509 |
| DXC-17 | 3.374 | 2.795 | 2.690 | 2.591 | 2.500 | 2.416 | 2.339 | 2.269 | 2.205 | 2.144 | 2.087 | 2.032 | 1.785 | 1.575 | 1.180 | 0.954 | 0.702 | 0.574 |
| DXC-19 | 3.961 | 3.255 | 3.123 | 3.001 | 2.894 | 2.794 | 2.702 | 2.618 | 2.538 | 2.464 | 2.394 | 2.329 | 2.051 | 1.827 | 1.401 | 1.148 | 0.857 | 0.696 |
| DXC-21 | 4.445 | 3.692 | 3.562 | 3.431 | 3.310 | 3.193 | 3.083 | 2.981 | 2.887 | 2.798 | 2.715 | 2.638 | 2.306 | 2.057 | 1.573 | 1.279 | 0.953 | 0.766 |
| DXC-23 | 4.628 | 3.824 | 3.686 | 3.556 | 3.435 | 3.323 | 3.220 | 3.125 | 3.035 | 2.951 | 2.872 | 2.796 | 2.457 | 2.177 | 1.651 | 1.312 | 0.975 | 0.781 |
| DXC-25 | 5.003 | 4.136 | 3.996 | 3.864 | 3.741 | 3.624 | 3.513 | 3.408 | 3.309 | 3.214 | 3.123 | 3.037 | 2.655 | 2.349 | 1.779 | 1.414 | 1.062 | 0.852 |
| DXC-27 | 5.545 | 4.591 | 4.423 | 4.266 | 4.120 | 3.985 | 3.862 | 3.749 | 3.643 | 3.544 | 3.449 | 3.359 | 2.949 | 2.601 | 1.946 | 1.561 | 1.134 | 0.928 |
| DXC-29 | 5.916 | 4.901 | 4.722 | 4.553 | 4.397 | 4.254 | 4.123 | 4.003 | 3.891 | 3.786 | 3.685 | 3.589 | 3.148 | 2.768 | 2.058 | 1.658 | 1.195 | 0.971 |
| DXC-31 | 6.278 | 5.203 | 5.012 | 4.834 | 4.668 | 4.517 | 4.378 | 4.251 | 4.133 | 4.022 | 3.916 | 3.814 | 3.342 | 2.930 | 2.165 | 1.751 | 1.247 | 1.008 |
| DXC-33 | 6.632 | 5.503 | 5.300 | 5.110 | 4.934 | 4.774 | 4.627 | 4.493 | 4.370 | 4.253 | 4.142 | 4.034 | 3.534 | 3.092 | 2.274 | 1.843 | 1.299 | 1.044 |
| DXC-35 | 6.980 | 5.796 | 5.582 | 5.381 | 5.196 | 5.026 | 4.872 | 4.732 | 4.602 | 4.479 | 4.362 | 4.249 | 3.718 | 3.244 | 2.372 | 1.930 | 1.347 | 1.076 |

*kW values listed represent 100% of the initial capacity.

**At 77°F (25°C) includes intercell connector drop.

All data subject to change without notice.



www.enersys.com

EnerSys
P.O. Box 14145
Reading, PA 19612-4145
USA
Tel: +1-610-208-1991
+1-800-538-3627
Fax:+1-610-372-8613

EnerSys EMEA
Brussels, Belgium
Tel:+32 (0)2 247 94 47
EnerSys Asia
Guangdong, China
Tel:+86-755-2689 3639

Represented by:

Printed in U.S.A.
© 2005 EnerSys. All rights reserved.
Trademarks and logos are the property
of EnerSys and its affiliates unless
otherwise noted.